

# **Sistemi e Servizi Innovativi S.r.l.**



## **Company profile**

**Updated November 2019**



# Summary

**01 SSI group**

**02 Main services**

**03 Solutions and products**

**04 Customers and projects**

**05 Contacts and references**



**1994**

Foundation of S.S.I. and opening of Rome office

**2000**

Opening of the Naples office

**2019**

New website and new corporate image

**2020**

Next opening of the new Milan office



# A constant growth over time



Fatturato



Revenue Mil. €



9,7

Dipendenti



Employees



240

# Founding values of the Company



**Financial stability**



**Sense of belonging**



**Vocation to the partnership**



**Professional experience**



**Taking responsibility**

# “Modus operandi” of S.S.I.



**We work to derive the maximum possible benefit from the application of information technology to production and management processes.**



**We design and develop software for third parties on traditional, web and mobile environments.**



**We manage very complex infrastructures and IT platforms for customers of national importance**



**Our customers know they can count on us to achieve their goals in the scheduled time, overcoming even the most challenging obstacles.**

# Quality certifications



| ISO          | CERTIFICATION ACHIEVED                             |
|--------------|--|
| <b>9001</b>  | Information systems management                     |
| <b>9001</b>  | Installation and assistance for HW and SW products |
| <b>27001</b> | Information security management system             |
| <b>14001</b> | Environmental management system                    |
| <b>20001</b> | IT service management system                       |

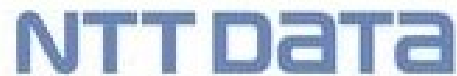


# The companies of the group



In its development path, **SSI** has acquired majority shares in a series of companies, which have become an integral part of its ecosystem.

# We work with market leaders



—Sistemi—e—Servizi—Innovativi—

# Professional outsourcing services

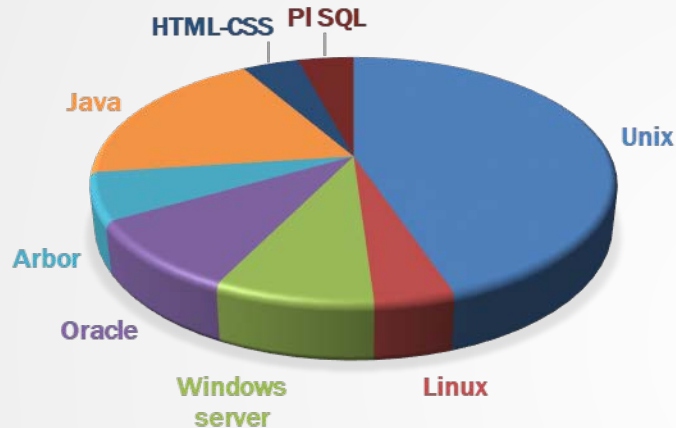


| Senior consultant  | Consultant  | Junior consultant   |
|--|---|---|
| It constitutes a figure of high professional content enjoying a valid theoretical preparation backed up by many years of experience.   | Figure substantially similar to the Senior Consultant. It is mainly distinguished by having a wealth of experience more limited over time.  | Professional with less experience but with a solid theoretical background that allows him to face problems independently.                         |
| Analyst  | Analyst developer   | Developer   |
| The analyst is an expert in structured analysis and design methodologies. Also it has considerable technical experience as well as the ability to manage relationships with users.                               | Professional figure with a good command of the tools necessary to support the implementation phase both in the design and in the realization of the modules of a project.                 | It is the professional figure suitable for creating application software components within a context of procedural analysis.                      |
| System architect   | Project manager   | Professor   |
| It is a figure of many years of experience, who is in charge of conceiving the architecture of the computer system, that is of the different SW components of system and their assembly and evolution over time. | The project manager is a figure of considerable experience invested with managerial responsibility for the client's job order, as well as the technical responsibility of the work group. | It is a figure that combines a high level of specialization with a remarkable mastery of the techniques of representation of the topics covered.. |

# Technical skills



## ACTIVITIES FOR TECHNICAL ENVIRONMENT



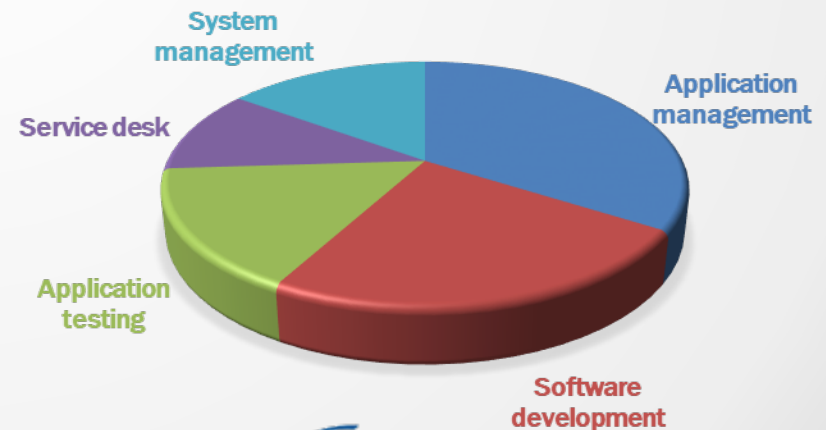
## System engineering skills

Microsoft  
s.o. Unix (HP UX, Sun Solaris,...)  
Dbms (Oracle, Sql server, db2,...)  
Web Sphere  
Middleware (Tibco, Bea)  
Reti, Cisco  
Linux  
Jboss

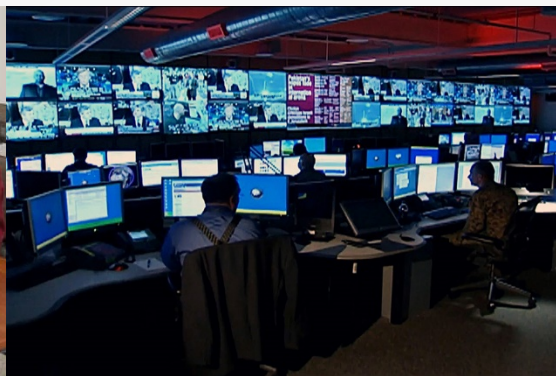
## SW application skills

Java – J2EE  
.Net  
Oracle PL/SQL  
Abap  
Billing – Kenan Arbor  
CRM – Siebel

## ACTIVITIES FOR PROFESSIONAL PROFILES



# Main services



## Application management

- Complete management of the corporate application systems
- Application management H24
- Management of integrated systems and operation monitoring

## System management

- Technological management of the company information system
- System management in windows
- System management in Linux, Unix environment

## Application testing

- System & unit test
- Integration test
- Integrated management of the entire test environment

# Main services (2)



## Technological architecture

- We are able to support the customer in the choice and in the ICT solutions, from the analysis and initial development, up to the commissioning of the project.
- We operate on the whole system from the network and technological infrastructure, to the application SW components and their integration.

## SW application development

- Development of highly customized IT solutions characterized by a high technological content in traditional, web or mobile environments.
- Throughout the implementation phase of the applications we take care of the business understanding phase to ensure the best results.

## Back Office & Service Desk

- We provide a single point of contact for all users of IT services.
- We manage the processes of Help Desk, Incident Management, Change Management, Configuration Management, Release Management and SLA.

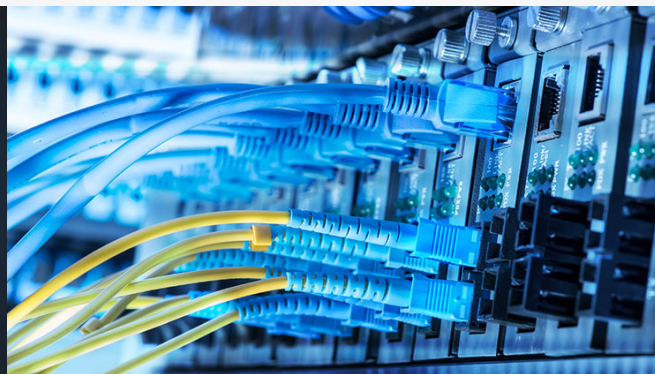


# Main services (3)



## Database management

- SSI uses the most important database management systems such as: DB2, Oracle, MySql and MS SQL Server.
- Our services include: improved performance, integration of heterogeneous data flows, data recovery.



## Network configuration & management

- The management and sharing of large quantities of information requires modern and high-performance network structures.
- Realization of network structures that allow the sharing of resources, PDLs, storage and databases.



## Technical training

- We provide training and refresher courses for internal staff, IT technicians and users.
- We use classrooms equipped with advanced tools and technologies according to high quality standards, so as to ensure excellent results.



# Application solutions



## Customer Relationship Management



## Business intelligence



## Security



## Enterprise application integration



# Primary customers by market area



| Banking  | Public sector   | Energy  |
|--|---|---|
|   <br>  <br>  <br>   |   <br>  <br>   |  <br>  <br>   |
| Telco  | Food  | Private sector  |
|   <br>   |   <br>     |   <br>    |

# Activity by market area



| Services            | Banking | Public | Energy | Telco | Food | Private |
|---------------------|---------|--------|--------|-------|------|---------|
| Application mgmt.   |         | ✓      | ✓      | ✓     |      | ✓       |
| System management   |         | ✓      |        | ✓     |      |         |
| Billing management  |         |        |        | ✓     |      |         |
| Java development    | ✓       | ✓      |        | ✓     |      |         |
| Web development     | ✓       | ✓      |        | ✓     |      |         |
| CRM, DWH, EAI       |         |        |        | ✓     |      |         |
| Application testing |         |        | ✓      | ✓     | ✓    | ✓       |

## A photograph of four smooth, dark, rounded stones stacked vertically on a calm body of water. The stones are dark grey or black with some lighter, mottled patterns. The water is a light blue-grey color, and the stones are reflected in it. Concentric ripples emanate from the base of the stack. The background is a clear, light blue sky.



# Company references

**ANDREA TESSICINI**

**Chief Executive Officer**

**[A.TESSICINI@SSIGROUP.IT](mailto:A.TESSICINI@SSIGROUP.IT)**

**MARCO FEDERICI**

**Technical Director**

**[M.FEDERICI@SSIGROUP.IT](mailto:M.FEDERICI@SSIGROUP.IT)**

**STEFANO BALONI**

**Account Manager**

**[S.BALONI@SSIGROUP.IT](mailto:S.BALONI@SSIGROUP.IT)**